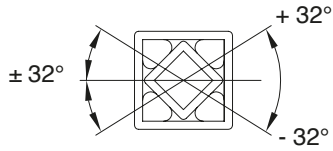
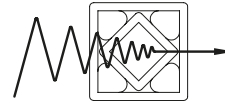


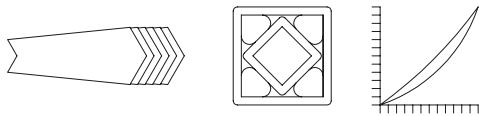
Caratteristiche del sistema elastico universale
Characteristics of the rubber suspension units



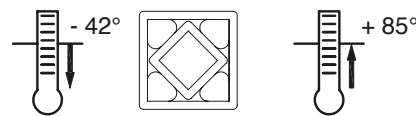
Ampio angolo d'azione
Large operating angle



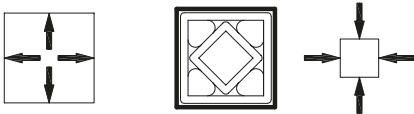
Riduzione di rumore e vibrazioni
Noise and vibration damping



Progressiva elasticità
Progressive spring characteristics



Resistenza alle temperature
Resistant to temperature



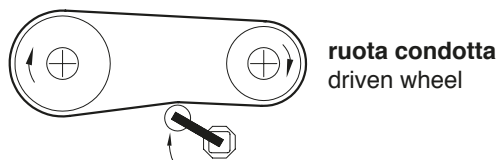
Sicurezza dell'utilizzo
Safe use in any position



Non necessita di manutenzione
Maintenance free

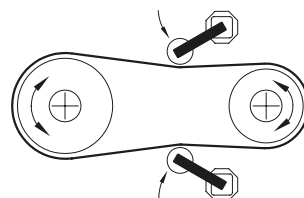
Istruzioni per il corretto montaggio del tendicatena (TEKS) e dei tendicinghia (TERE)

Instructions for a proper mounting of the chain tensioner (TEKS) and of the belt tensioner (TERE)

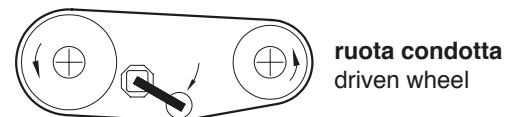


ruota condotta
driven wheel

Tenditore sul lato lasco
Tensioner on the loose side



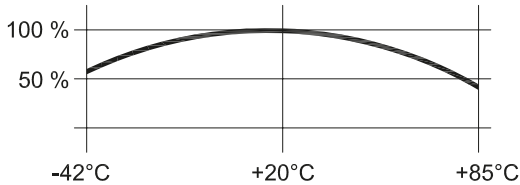
Con motore reversibile montare 2 tendicatena
With reversible engine mount 2 tensioners



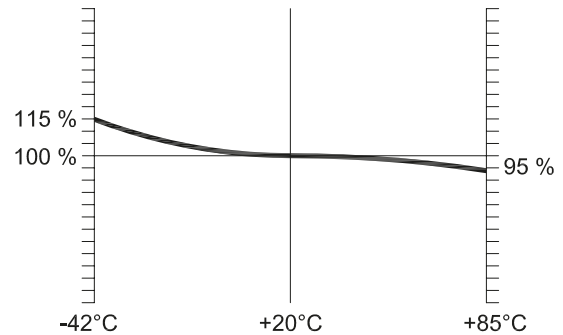
ruota condotta
driven wheel

Montaggio con trasmissione a cinghia con profilo a V
Mounting with belt transmission with V profile

Caratteristiche della gomma
Characteristics of the rubber

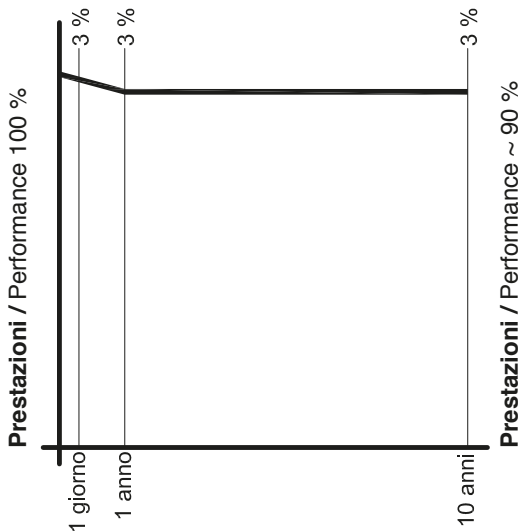


Temperatura ambiente
Room temperature



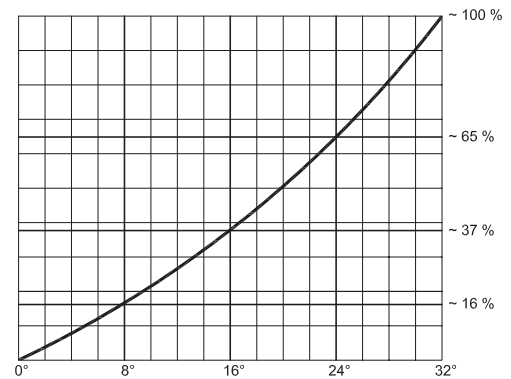
Temperatura ambiente
Room temperature

Durata in condizioni normali di temperatura ~ 10 anni
Temperature influence: service life (under normal conditions) ~ 10 years



Deformazioni e assestamento della gomma
Could flow and setting

Influenza della temperatura: coppia di reazione (N/m)
Temperature influence: torque reaction (N/m)



Determinazione della coppia "in percentuale"
Torque determination "in percentage"

Il grafico è applicabile per tutte le dimensioni dei tipi: LTK-S, LTK-A, LTS, LTA

This chart is applicable to all type of: LTK-S, LTK-A, LTS, LTA

Esempio per la determinazione LTS 6-80 con coppia M 215 in Nm a 32° (pag 150)

Example for determinating LTS 6-80 with torque M 215 with Nm a 32° (page 150)

Con angolo di 15° = 35% = ~ 75 Nm

With an angle of 15° = 35% = ~ 75 Nm

Con angolo di 22° = 56% = ~ 120 Nm

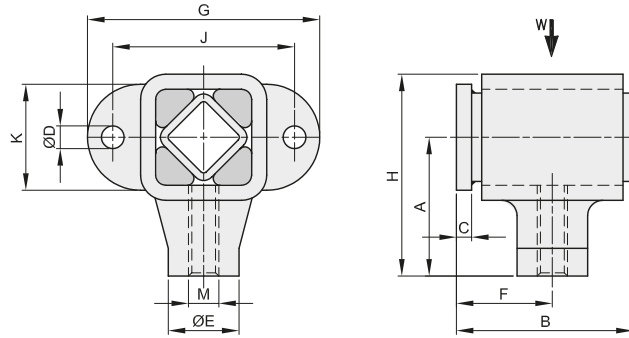
With an angle of 22° = 56% = ~ 120 Nm

Con angolo di 28° = 81% = ~ 174 Nm

With an angle of 28° = 81% = ~ 174 Nm



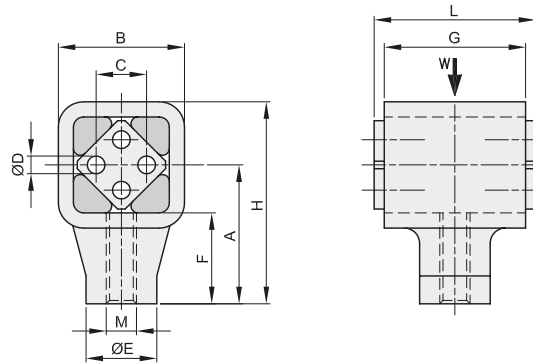
ELEMENTI OSCILLANTI TIPO "OM" OSCILLANTING MOUNTING TYPE "OM"



descrizione	codice	A	B	C	Ø D	E	F	G	H	J	K	M	W carico max in N	Fr Freq. max in min -1	Kg.
OM 4 R	6024000041	40	61	5	9	24	33	82	58	60	30	M12 R	190	1250	0,28
OM 4 L	6024000042	40	61	5	9	24	33	82	58	60	30	M12 L	190	1250	0,28
OM 5 R	6024000051	55	75	6	11	30	41	108	81	80	45	M16 R	380	780	0,58
OM 5 L	6024000052	55	75	6	11	30	41	108	81	80	45	M16 L	380	780	0,58
OM 6 R	6024000061	80	98	8	13	40	53	130	115	100	60	M20 R	780	760	1,45
OM 6 L	6024000062	80	98	8	13	40	53	130	115	100	60	M20 L	780	760	1,45
OM 7 R	6024000071	90	118	8	17	50	63	170	135	130	70	M24 R	1550	750	2,54
OM 7 L	6024000072	90	118	8	17	50	63	170	135	130	70	M24 L	1550	750	2,54
OM 8 R	6024000081	100	140	10	17	60	75	180	147	140	80	M36 R	2400	580	6,05
OM 8 L	6024000082	100	140	10	17	60	75	180	147	140	80	M36 L	2400	580	6,05



TESTE DI BIELLA TIPO "DH" CRANKDRIVE UNIT TYPE "DH"



descrizione	codice	A	B	C	Ø D	E	F	G	H	L	M	W forza accel. in N	ne Vel. di rotaz. in min -1	Kg.
DH 4-50 R	6025004501	40	36	12	6	24	25	50	58	55	M12 R	380	1250	0,20
DH 4-50 L	6025004502	40	36	12	6	24	25	50	58	55	M12 L	380	1250	0,20
DH 5-60 R	6025005601	55	52	20	8	30	35	60	81	65	M16 R	960	1200	0,52
DH 5-60 L	6025005602	55	52	20	8	30	35	60	81	65	M16 L	960	1200	0,52
DH 6-80 R	6025006801	80	72	25	10	40	52	80	115	90	M20 R	1900	780	1,48
DH 6-80 L	6025006802	80	72	25	10	40	52	80	115	90	M20 L	1900	780	1,48
DH 7-100 R	6025071001	90	90	35	12	50	55	100	135	110	M24 R	3400	750	2,65
DH 7-100 L	6025071002	90	90	35	12	50	55	100	135	110	M24 L	3400	750	2,65
DH 8-120 R	6025081201	100	94	40	M12x30	60	64	120	147	130	M36 R	5800	580	6,30
DH 8-120 L	6025081202	100	94	40	M12x30	60	64	120	147	130	M36 L	5800	580	6,30
DH 9-200 R	6025092001	120	120	45	M16x25	80	75	200	180	210	M42 R	11500	330	17,70
DH 9-200 L	6025092002	120	120	45	M16x25	80	75	200	180	210	M42 L	11500	330	17,70
DH 9-300 R	6025093001	120	120	45	M16x25	80	75	300	180	310	M42 R	17500	300	26,50
DH 9-300 L	6025093002	120	120	45	M16x25	80	75	300	180	310	M42 L	17500	300	26,50