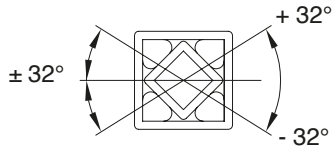
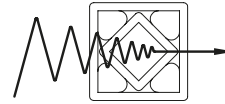


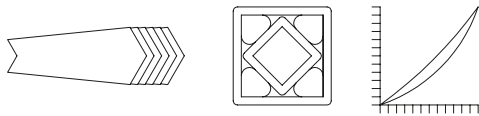
**Caratteristiche del sistema elastico universale**  
Characteristics of the rubber suspension units



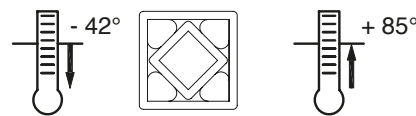
**Ampio angolo d'azione**  
Large operating angle



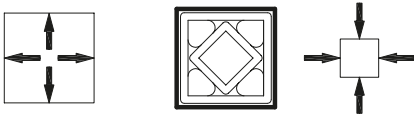
**Riduzione di rumore e vibrazioni**  
Noise and vibration damping



**Progressiva elasticità**  
Progressive spring characteristics



**Resistenza alle temperature**  
Resistant to temperature



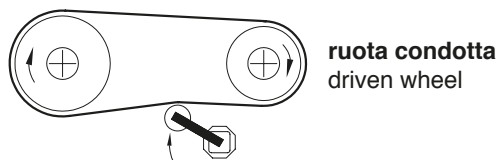
**Sicurezza dell'utilizzo**  
Safe use in any position



**Non necessita di manutenzione**  
Maintenance free

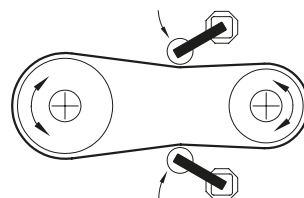
**Istruzioni per il corretto montaggio del tendicatena (TEKS) e dei tendicinghia (TERE)**

Instructions for a proper mounting of the chain tensioner (TEKS) and of the belt tensioner (TERE)

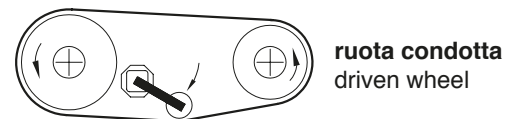


**ruota condotta**  
driven wheel

**Tenditore sul lato lasco**  
Tensioner on the loose side



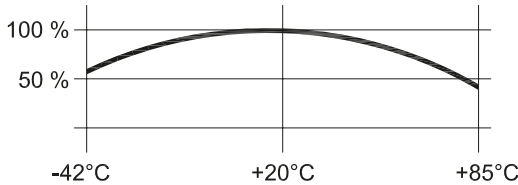
**Con motore reversibile montare 2 tendicatena**  
With reversible engine mount 2 tensioners



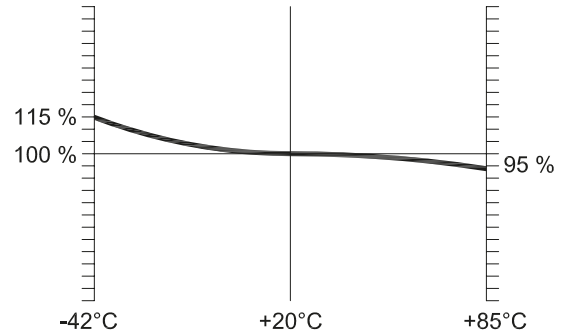
**ruota condotta**  
driven wheel

**Montaggio con trasmissione a cinghia con profilo a V**  
Mounting with belt transmission with V profile

**Caratteristiche della gomma**  
Characteristics of the rubber

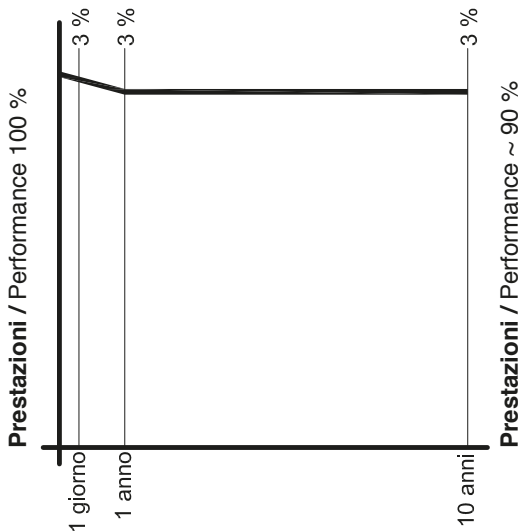


**Temperatura ambiente**  
Room temperature



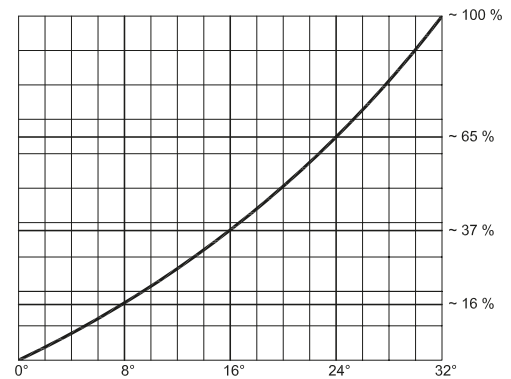
**Temperatura ambiente**  
Room temperature

**Durata in condizioni normali di temperatura ~ 10 anni**  
Temperature influence: service life (under normal conditions) ~ 10 years



**Deformazioni e assestamento della gomma**  
Could flow and setting

**Influenza della temperatura: coppia di reazione (N/m)**  
Temperature influence: torque reaction (N/m)



**Determinazione della coppia "in percentuale"**  
Torque determination "in percentage"

**Il grafico è applicabile per tutte le dimensioni dei tipi: LTK-S, LTK-A, LTS, LTA**

This chart is applicable to all type of: LTK-S, LTK-A, LTS, LTA

**Esempio per la determinazione LTS 6-80 con coppia M 215 in Nm a 32° (pag 150)**

Example for determinating LTS 6-80 with torque M 215 with Nm a 32° (page 150)

**Con angolo di 15° = 35% = ~ 75 Nm**

With an angle of 15° = 35% = ~ 75 Nm

**Con angolo di 22° = 56% = ~ 120 Nm**

With an angle of 22° = 56% = ~ 120 Nm

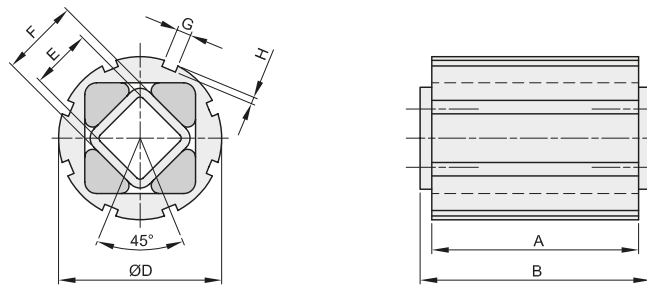
**Con angolo di 28° = 81% = ~ 174 Nm**

With an angle of 28° = 81% = ~ 174 Nm



## ELEMENTI ELASTICI TIPO "LTK-S" RUBBER SUSPENSION UNIT TYPE "LTK-S"

**RESATEC**  
CERTIFICATA ISO 9001

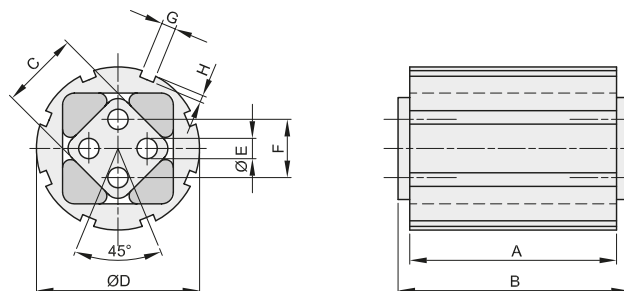


descrizione	codice	Coppia M in Nm a 32° Torque M in Nm at 32°	A	B	Ø D	E	F	G	H	Kg.
LTK-S 5-40	6029005040	56	40	45	62	22	27	6	3	0,30
LTK-S 5-60	6029005060	85	60	65	62	22	27	6	3	0,40
LTK-S 5-100	6029005100	140	100	105	62	22	27	6	3	0,65
LTK-S 6-60	6029006060	160	60	70	80	30	38	7	3,5	0,70
LTK-S 6-80	6029006080	215	80	90	80	30	38	7	3,5	0,90
LTK-S 6-120	6029006120	320	120	130	80	30	38	7	3,5	1,30



## ELEMENTI ELASTICI TIPO "LTK-A" RUBBER SUSPENSION UNIT TYPE "LTK-A"

**RESATEC**  
CERTIFICATA ISO 9001



descrizione	codice	Coppia M in Nm a 32° Torque M in Nm at 32°	A	B	C	Ø D	Ø E	F	G	H	Kg.
LTK-A 5-40	6030005040	56	40	45	27	62	8	20	6	3	0,25
LTK-A 5-60	6030005060	85	60	65	27	62	8	20	6	3	0,35
LTK-A 5-100	6030005100	140	100	105	27	62	8	20	6	3	0,60
LTK-A 6-60	6030006060	160	60	70	38	80	10	25	7	3,5	0,60
LTK-A 6-80	6030006080	215	80	90	38	80	10	25	7	3,5	0,80
LTK-A 6-120	6030006120	320	120	130	38	80	10	25	7	3,5	1,20