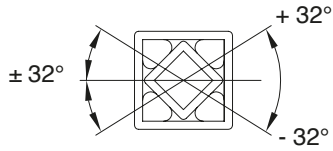
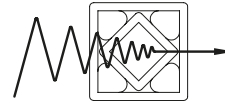


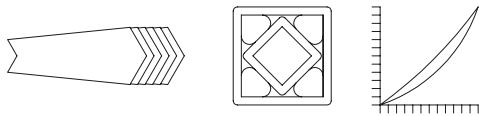
Caratteristiche del sistema elastico universale
Characteristics of the rubber suspension units



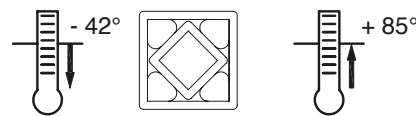
Ampio angolo d'azione
Large operating angle



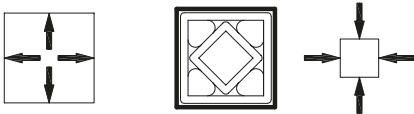
Riduzione di rumore e vibrazioni
Noise and vibration damping



Progressiva elasticità
Progressive spring characteristics



Resistenza alle temperature
Resistant to temperature



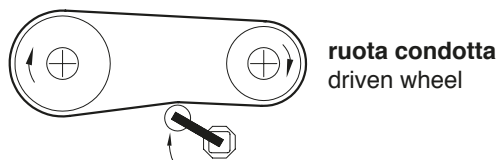
Sicurezza dell'utilizzo
Safe use in any position



Non necessita di manutenzione
Maintenance free

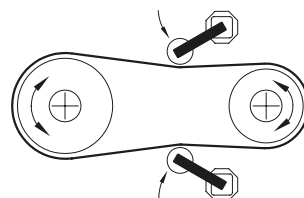
Istruzioni per il corretto montaggio del tendicatena (TEKS) e dei tendicinghia (TERE)

Instructions for a proper mounting of the chain tensioner (TEKS) and of the belt tensioner (TERE)

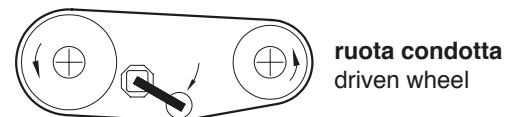


ruota condotta
driven wheel

Tenditore sul lato lasco
Tensioner on the loose side



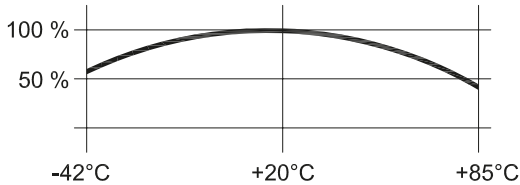
Con motore reversibile montare 2 tendicatena
With reversible engine mount 2 tensioners



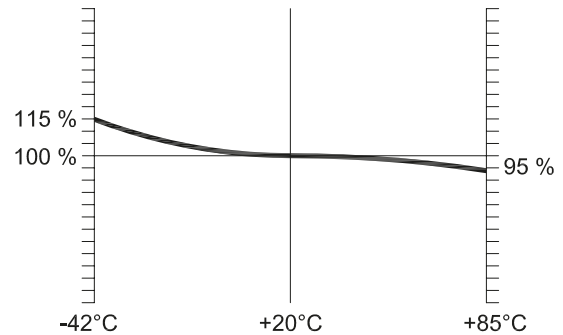
ruota condotta
driven wheel

Montaggio con trasmissione a cinghia con profilo a V
Mounting with belt transmission with V profile

Caratteristiche della gomma
Characteristics of the rubber

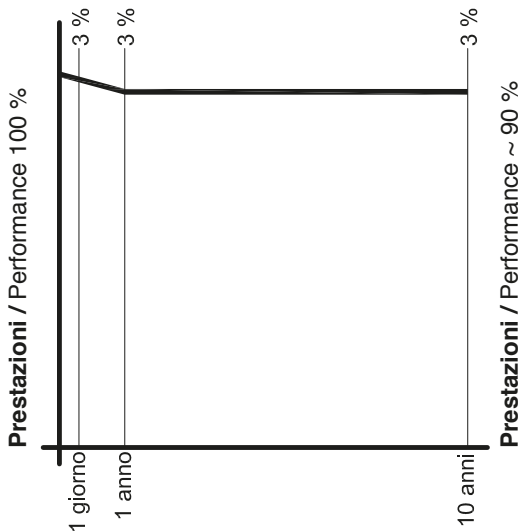


Temperatura ambiente
Room temperature



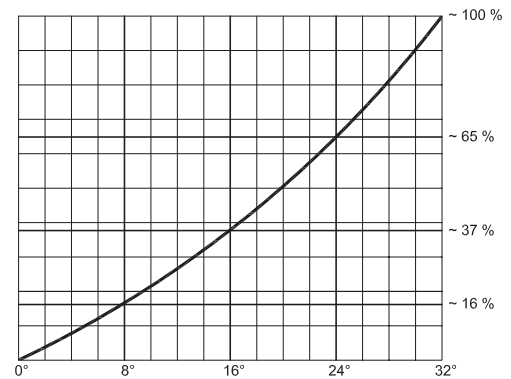
Temperatura ambiente
Room temperature

Durata in condizioni normali di temperatura ~ 10 anni
Temperature influence: service life (under normal conditions) ~ 10 years



Deformazioni e assestamento della gomma
Could flow and setting

Influenza della temperatura: coppia di reazione (N/m)
Temperature influence: torque reaction (N/m)



Determinazione della coppia "in percentuale"
Torque determination "in percentage"

Il grafico è applicabile per tutte le dimensioni dei tipi: LTK-S, LTK-A, LTS, LTA

This chart is applicable to all type of: LTK-S, LTK-A, LTS, LTA

Esempio per la determinazione LTS 6-80 con coppia M 215 in Nm a 32° (pag 150)

Example for determinating LTS 6-80 with torque M 215 with Nm a 32° (page 150)

Con angolo di 15° = 35% = ~ 75 Nm

With an angle of 15° = 35% = ~ 75 Nm

Con angolo di 22° = 56% = ~ 120 Nm

With an angle of 22° = 56% = ~ 120 Nm

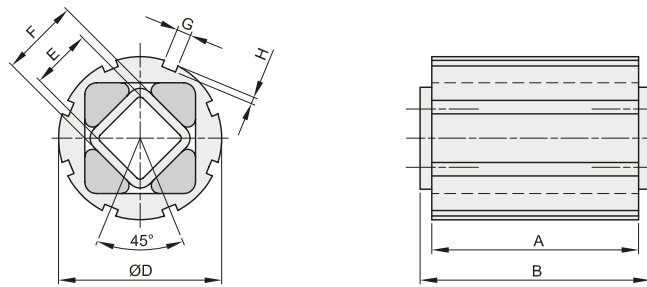
Con angolo di 28° = 81% = ~ 174 Nm

With an angle of 28° = 81% = ~ 174 Nm



ELEMENTI ELASTICI TIPO "LTK-S" RUBBER SUSPENSION UNIT TYPE "LTK-S"

RESATEC
CERTIFICATA ISO 9001

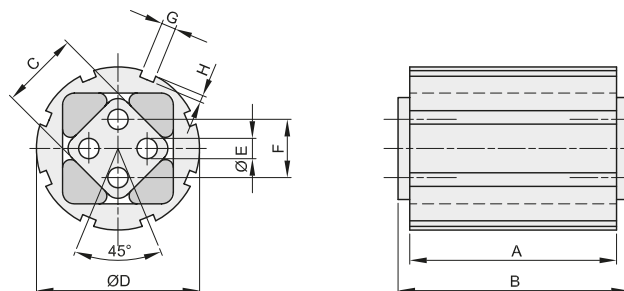


descrizione	codice	Coppia M in Nm a 32° Torque M in Nm at 32°	A	B	Ø D	E	F	G	H	Kg.
LTK-S 5-40	6029005040	56	40	45	62	22	27	6	3	0,30
LTK-S 5-60	6029005060	85	60	65	62	22	27	6	3	0,40
LTK-S 5-100	6029005100	140	100	105	62	22	27	6	3	0,65
LTK-S 6-60	6029006060	160	60	70	80	30	38	7	3,5	0,70
LTK-S 6-80	6029006080	215	80	90	80	30	38	7	3,5	0,90
LTK-S 6-120	6029006120	320	120	130	80	30	38	7	3,5	1,30



ELEMENTI ELASTICI TIPO "LTK-A" RUBBER SUSPENSION UNIT TYPE "LTK-A"

RESATEC
CERTIFICATA ISO 9001



descrizione	codice	Coppia M in Nm a 32° Torque M in Nm at 32°	A	B	C	Ø D	Ø E	F	G	H	Kg.
LTK-A 5-40	6030005040	56	40	45	27	62	8	20	6	3	0,25
LTK-A 5-60	6030005060	85	60	65	27	62	8	20	6	3	0,35
LTK-A 5-100	6030005100	140	100	105	27	62	8	20	6	3	0,60
LTK-A 6-60	6030006060	160	60	70	38	80	10	25	7	3,5	0,60
LTK-A 6-80	6030006080	215	80	90	38	80	10	25	7	3,5	0,80
LTK-A 6-120	6030006120	320	120	130	38	80	10	25	7	3,5	1,20