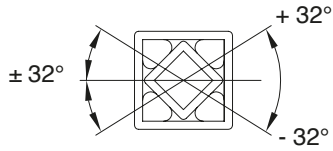
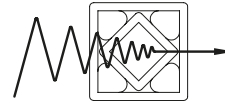


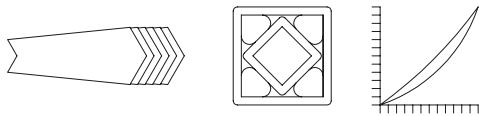
**Caratteristiche del sistema elastico universale**  
Characteristics of the rubber suspension units



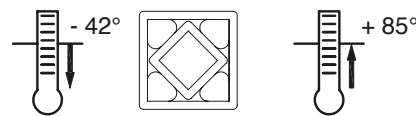
**Ampio angolo d'azione**  
Large operating angle



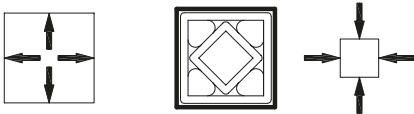
**Riduzione di rumore e vibrazioni**  
Noise and vibration damping



**Progressiva elasticità**  
Progressive spring characteristics



**Resistenza alle temperature**  
Resistant to temperature



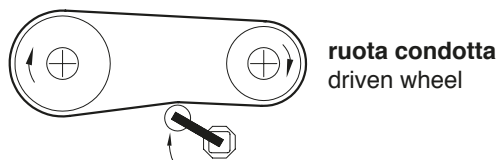
**Sicurezza dell'utilizzo**  
Safe use in any position



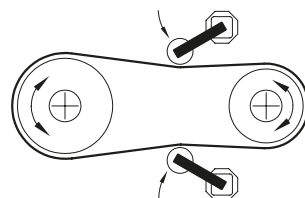
**Non necessita di manutenzione**  
Maintenance free

**Istruzioni per il corretto montaggio del tendicatena (TEKS) e dei tendicinghia (TERE)**

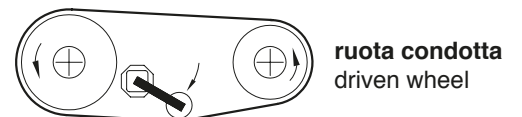
Instructions for a proper mounting of the chain tensioner (TEKS) and of the belt tensioner (TERE)



**Tenditore sul lato lasco**  
Tensioner on the loose side

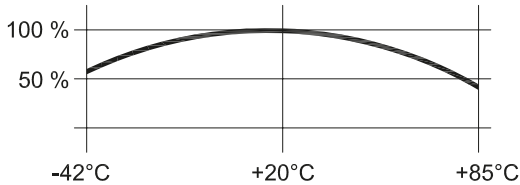


**Con motore reversibile montare 2 tendicatena**  
With reversible engine mount 2 tensioners

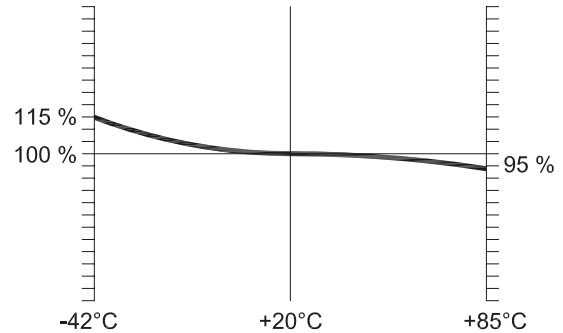


**Montaggio con trasmissione a cinghia con profilo a V**  
Mounting with belt transmission with V profile

**Caratteristiche della gomma**  
Characteristics of the rubber

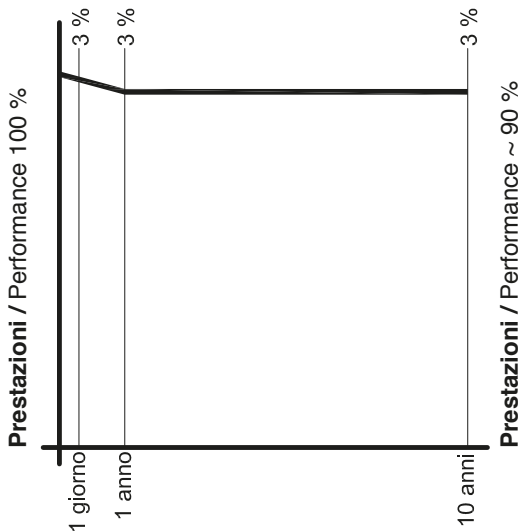


**Temperatura ambiente**  
Room temperature



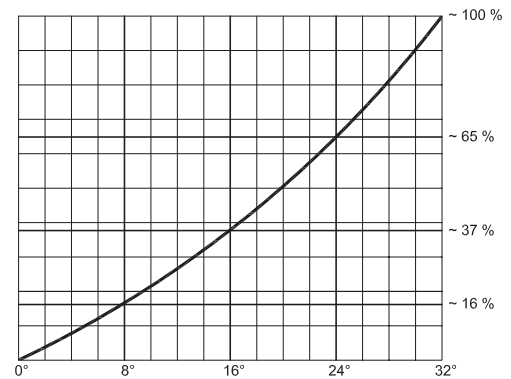
**Temperatura ambiente**  
Room temperature

**Durata in condizioni normali di temperatura ~ 10 anni**  
Temperature influence: service life (under normal conditions) ~ 10 years



**Deformazioni e assestamento della gomma**  
Could flow and setting

**Influenza della temperatura: coppia di reazione (N/m)**  
Temperature influence: torque reaction (N/m)



**Determinazione della coppia "in percentuale"**  
Torque determination "in percentage"

**Il grafico è applicabile per tutte le dimensioni dei tipi: LTK-S, LTK-A, LTS, LTA**

This chart is applicable to all type of: LTK-S, LTK-A, LTS, LTA

**Esempio per la determinazione LTS 6-80 con coppia M 215 in Nm a 32° (pag 150)**

Example for determinating LTS 6-80 with torque M 215 with Nm a 32° (page 150)

**Con angolo di 15° = 35% = ~ 75 Nm**

With an angle of 15° = 35% = ~ 75 Nm

**Con angolo di 22° = 56% = ~ 120 Nm**

With an angle of 22° = 56% = ~ 120 Nm

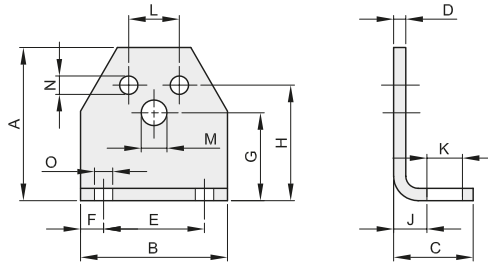
**Con angolo di 28° = 81% = ~ 174 Nm**

With an angle of 28° = 81% = ~ 174 Nm



## SUPPORTI TIPO "MA" MOUNTING SUPPORT TYPE "MA"

**RESATEC**  
CERTIFICATA ISO 9001

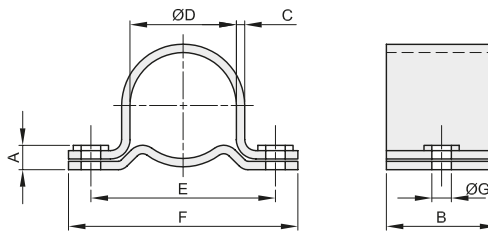


descrizione	codice	adatto a tipo		A	B	C	D	E	F	G	H	J	K	L	M	N	O	Kg.
		TE...	LT...															
MA 2	6031000002	2	3	46	50	30	4	30	10	27	35	12	13	10	6,5	5,5	7	0,09
MA 3	6031000003	3	4	58	60	32	6	40	10	34	44	14	13	12	8,5	6,5	7	0,19
MA 4	6031000004	4	5	75	70	38	6	50	10	45	55	16	16	20	10,5	8,5	9,5	0,30
MA 5	6031000005	5	6	98	90	52	8	65	12,5	58	75	21	22	25	12,5	10,5	11,5	0,70
MA 6	6031000006	6	7	116	110	55	8	80	15	66	85	21	24	35	16,5	12,5	14	0,90
MA 7	6031000007	7	8	140	140	66	10	100	20	80	110	26	30	40	20,5	12,5	18	1,80



## STAFFE TIPO "CK" MOUNTING CLAMP TYPE "CK"

**RESATEC**  
CERTIFICATA ISO 9001

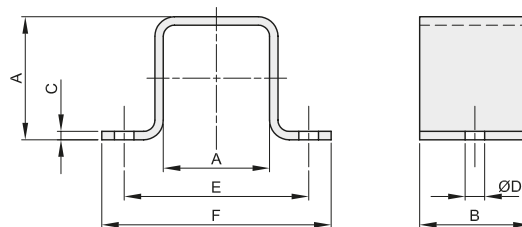


descrizione	codice	A	B	C	Ø D	E	F	Ø G	Kg.
CK 5	6032000005	10	40	3	62	92	125	10,5	0,30
CK 6	6032000006	11	40	3	80	115	150	12,5	0,45



## STAFFE TIPO "MS" MOUNTING CLAMP TYPE "MS"

**RESATEC**  
CERTIFICATA ISO 9001



descrizione	codice	A	B	C	Ø D	E	F	Kg.
MS 3	6033000003	27	25	2	6,5	50	65	0,04
MS 4	6033000004	32	30	3	8,5	60	80	0,09
MS 5	6033000005	45	35	3	10,5	80	105	0,16
MS 6	6033000006	60	40	5	12,5	100	125	0,29
MS 7	6033000007	72	45	5	12,5	115	145	0,45
MS 8	6033000008	80	50	6	17	130	170	0,68