



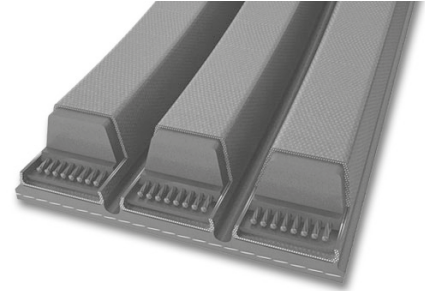
CINGHIE CONTI®V “MULTIBELT ADVANCE” BANDED V-BELTS “ADVANCE” CONTI®V

**CINGHIE TRAPEZOIDALI MULTIPLE CON ANIMA RESISTENTE RINFORZATA
DI POLIESTERE PER AZIONAMENTI CON CARICHI FORTEMENTE IRREGOLARI**

**BANDED V-BELTS WITH REINFORCED PE TENSILE MEMBER FOR DRIVES
WITH MAJOR LOAD CHANGES**

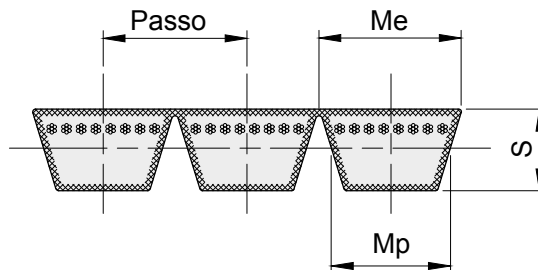
Proprietà

- › Resistenti a temperature comprese tra -30°C e +80°C in funzione dell'applicazione
- › Relativamente resistenti all'olio
- › Elettricamente conduttrici secondo ISO 1813
- › Resistenti alla polvere
- › Utilizzabili in climi tropicali
- › Potenza aumentata
- › Particolarmente silenziose
- › Idonee per giunti
- › Idonee per controflessioni



Properties

- › Temperature range from -30 °C to +80 °C depending on application
- › Limited resistant to oil
- › Electrically conductive according to ISO 1813
- › Dust-proof
- › Tropic-proof
- › Higher performance
- › Particularly smooth-running
- › Suitable for clutches
- › Suitable for counterflexing



DIMENSIONI CINGHIA
DIMENSIONS OF V-BELT



descrizione	Passo mm	Me mm	Mp mm	S mm
3V (9J)	10,30	9,0		10,0
5V (15J)	17,50	15,0		16,0
8V (25J)	28,60	25,0		25,5
A	15,88	13,0		11,0
B	19,05	17,0		14,3
C	25,40	22,0		18,0
D	36,50	32,0		21,8
SP2	12,00	9,7	8,5	11,0
SPA	15,00	12,7	11,0	13,0
SPB	19,00	16,3	14,0	16,5
SPC	25,50	22,3	19,0	22,0

Dimensioni e prezzi su richiesta
All sizes and prices are available on request