



# CINGHIE TRAPEZOIDALI A SEZIONE CLASSICA CONTI®V DIN 2215

## CLASSIC V-BELTS CONTI®V DIN 2215

### CINGHIE TRAPEZOIDALI RIVESTITE CONTI®V PER TRASMISSIONI ESIGENTI NELL'INTERO SETTORE DELLE COSTRUZIONI MECCANICHE, DIN 2215

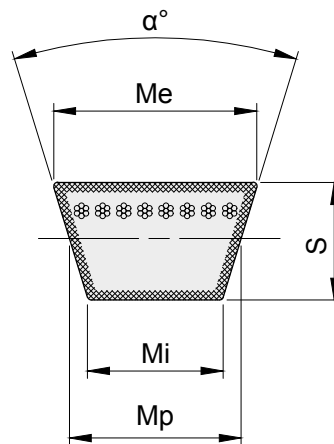
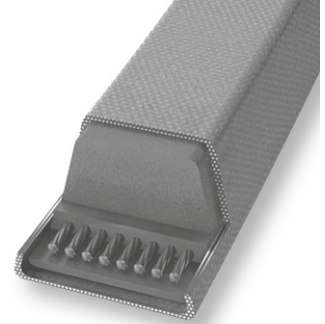
CONTI®V WRAPPED V-BELTS FOR DEMANDING DRIVES IN ALL SECTORS OF MACHINE ENGINEERING, DIN 2215

#### Proprietà

- › Resistenti a temperature comprese tra -55°C e +70°C in funzione dell'applicazione
- › Stesso sviluppo L=L (da 1000 mm)
- › Elettricamente conduttrici a norma ISO 1813
- › Relativamente resistenti all'olio
- › Utilizzabili in climi tropicali
- › Resistenti alla polvere

#### Properties

- › Temperature range from -55 °C to +70 °C, depending on application
- › Matched set L=L (from 1000 mm)
- › Electrically conductive in accordance with ISO 1813
- › Conditionally resistant to oil
- › Suitable for tropical climates
- › Dust-proof



#### DIMENSIONI CINGHIA DIMENSIONS OF V-BELT

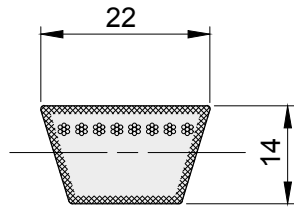


descrizione	$\alpha$ gradi	Me mm	Mp mm	Mi mm	S mm
Z	40°	10,00	8,5	6,1	6
A	40°	13,00	11,0	7,8	8
B	40°	17,00	14,0	9,4	11
C	40°	22,00	19,0	12,9	14
D	40°	32,00	27,0	19,2	19
E	40°	40,00	32,0	22,4	24



# CINGHIE TRAPEZOIDALI A SEZIONE CLASSICA CONTI®V DIN 2215

## CLASSIC V-BELTS CONTI®V DIN 2215

**C****C****C**

descrizione	codice	sviluppo interno mm	Kg.
C 41	CVC04100	1041	0,336
C 42	CVC04200	1067	0,320
C 43	CVC04300	1090	0,353
*C 44	CVC04400	1120	0,336
C 45	CVC04500	1143	0,369
C 46,5	CVC04650	1180	0,354
C 47	CVC04700	1200	0,385
C 48	CVC04800	1220	0,394
C 49	CVC04900	1250	0,402
C 50	CVC05000	1270	0,410
C 51	CVC05100	1295	0,389
C 52	CVC05200	1320	0,426
C 53	CVC05300	1350	0,435
C 54	CVC05400	1375	0,443
C 55	CVC05500	1400	0,451
C 56	CVC05600	1425	0,459
C 57	CVC05700	1450	0,467
C 58	CVC05800	1475	0,468
C 59	CVC05900	1500	0,484
C 60	CVC06000	1524	0,484
C 61	CVC06100	1550	0,500
C 62	CVC06200	1575	0,508
C 63	CVC06300	1600	0,508
C 64	CVC06400	1626	0,516
C 65	CVC06500	1650	0,533
C 66	CVC06600	1676	0,541
C 67	CVC06700	1700	0,540
C 68	CVC06800	1727	0,518
C 69	CVC06900	1750	0,566
C 70	CVC07000	1778	0,565
C 71	CVC07100	1800	0,573
C 72	CVC07200	1829	0,590
C 73	CVC07300	1854	0,589
C 74	CVC07400	1880	0,597
C 75	CVC07500	1900	0,616
C 76	CVC07600	1930	0,613
C 76,5	CVC07650	1950	0,585
C 77	CVC07700	1956	0,621
C 78	CVC07800	1981	0,629
C 79	CVC07900	2000	0,648
C 80	CVC08000	2032	0,645
C 81	CVC08100	2057	0,664
C 82	CVC08200	2083	0,672
C 83	CVC08300	2108	0,681
C 83,5	CVC08350	2120	0,636
C 84	CVC08400	2135	0,689
C 85	CVC08500	2159	0,697
C 86	CVC08600	2184	0,705
C 87	CVC08700	2210	0,663

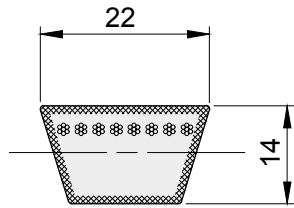
descrizione	codice	sviluppo interno mm	Kg.
C 88	CVC08800	2240	0,722
C 89	CVC08900	2261	0,718
C 90	CVC09000	2286	0,738
C 91	CVC09100	2311	0,746
*C 91,5	CVC09150	2324	0,697
C 92	CVC09200	2337	0,754
C 93	CVC09300	2360	0,763
C 94	CVC09400	2388	0,771
C 95	CVC09500	2413	0,742
C 96	CVC09600	2438	0,787
C 96,5	CVC09650	2450	0,791
C 97	CVC09700	2464	0,782
C 98	CVC09800	2500	0,804
C 99	CVC09900	2525	0,799
C 100	CVC10000	2540	0,820
C 101	CVC10100	2560	0,815
C 102	CVC10200	2591	0,836
C 103	CVC10300	2616	0,831
C 104	CVC10400	2642	0,839
C 105	CVC10500	2670	0,887
C 105,7	CVC10570	2685	0,890
C 106	CVC10600	2692	0,893
C 107	CVC10700	2718	0,904
*C 107,3	CVC10730	2725	0,910
C 108	CVC10800	2750	0,914
C 109	CVC10900	2769	0,831
C 110	CVC11000	2800	0,929
C 111	CVC11100	2819	0,937
C 112	CVC11200	2845	0,944
C 113	CVC11300	2865	0,953
C 114	CVC11400	2900	0,964
C 115	CVC11500	2921	0,971
C 116	CVC11600	2950	0,981
C 117	CVC11700	2965	0,986
C 118	CVC11800	3000	0,998
*C 119	CVC11900	3030	1,007
C 120	CVC12000	3050	1,014
*C 121	CVC12100	3073	1,022
C 122	CVC12200	3099	1,030
C 124	CVC12400	3150	1,047
C 125	CVC12500	3175	1,056
C 126	CVC12600	3200	1,032
C 127	CVC12700	3226	1,040
C 128	CVC12800	3250	1,048
C 130	CVC13000	3302	1,065
C 131	CVC13100	3327	0,998
C 132	CVC13200	3350	1,080
*C 133	CVC13300	3378	1,089
C 134	CVC13400	3404	1,098

descrizione	codice	sviluppo interno mm	Kg.
C 136	CVC13600	3454	1,114
C 137	CVC13700	3480	1,122
C 138	CVC13800	3505	1,130
C 139	CVC13900	3531	1,059
C 140	CVC14000	3550	1,145
C 142	CVC14200	3607	1,150
C 143	CVC14300	3632	1,160
C 144	CVC14400	3658	1,166
C 145	CVC14500	3683	1,175
C 146	CVC14600	3700	1,183
C 147	CVC14700	3734	1,190
C 148	CVC14800	3750	1,199
*C 149	CVC14900	3785	1,207
C 150	CVC15000	3810	1,215
C 151,5	CVC15150	3848	1,220
C 152	CVC15200	3861	1,230
C 154	CVC15400	3912	1,247
C 155	CVC15500	3937	1,256
C 156	CVC15600	3962	1,264
C 157	CVC15700	3988	1,272
C 158	CVC15800	4000	1,280
*C 158,5	CVC15850	4020	1,206
C 159	CVC15900	4039	1,288
C 160	CVC16000	4064	1,296
C 162	CVC16200	4115	1,312
*C 163	CVC16300	4140	1,320
*C 164	CVC16400	4166	1,328
C 166	CVC16600	4216	1,345
C 167	CVC16700	4250	1,353
C 168	CVC16800	4267	1,361
C 170	CVC17000	4318	1,377
C 173	CVC17300	4390	1,401
C 175	CVC17500	4445	1,418
C 177	CVC17700	4500	1,434
C 178	CVC17800	4521	1,442
C 180	CVC18000	4572	1,458
C 181	CVC18100	4600	1,466
C 182	CVC18200	4623	1,474
C 183	CVC18300	4648	1,482
*C 185	CVC18500	4699	1,499
C 187	CVC18700	4750	1,515
*C 189	CVC18900	4800	1,531
C 190	CVC19000	4826	1,539
C 192	CVC19200	4877	1,555
C 193	CVC19300	4900	1,563
C 195	CVC19500	4953	1,580
C 197	CVC19700	5000	1,596
*C 198	CVC19800	5029	1,604
C 200	CVC20000	5080	1,620



# CINGHIE TRAPEZOIDALI A SEZIONE CLASSICA CONTI®V DIN 2215

## CLASSIC V-BELTS CONTI®V DIN 2215



### C

descrizione	codice	sviluppo interno mm	Kg.		
C 202	CVC20200	5131	1,636		
*C 203	CVC20300	5156	1,644		
C 204	CVC20400	5182	1,652		
C 208	CVC20800	5283	1,685		
C 209	CVC20900	5300	1,693		
C 210	CVC21000	5334	1,701		
*C 211,5	CVC21150	5372	1,612		
C 215	CVC21500	5461	1,742		
C 216	CVC21600	5486	1,750		
C 217	CVC21700	5500	1,758		
C 220	CVC22000	5600	1,782		
*C 222	CVC22200	5639	1,798		
*C 224	CVC22400	5700	1,814		
C 225	CVC22500	5715	1,823		
C 228	CVC22800	5791	1,847		
C 230	CVC23000	5842	1,863		
C 236	CVC23600	6000	1,912		
*C 238	CVC23800	6045	1,928		
C 240	CVC24000	6096	1,944		
C 244	CVC24400	6200	1,976		
C 248	CVC24800	6300	2,009		
C 250	CVC25000	6350	2,025		
C 255	CVC25500	6477	2,066		
C 260	CVC26000	6604	2,106		
C 264	CVC26400	6700	2,138		
C 268	CVC26800	6807	2,180		
C 270	CVC27000	6858	2,187		
C 276	CVC27600	7010	2,103		
C 280	CVC28000	7100	2,268		
C 285	CVC28500	7239	2,309		
*C 288	CVC28800	7315	2,333		
*C 295	CVC29500	7500	2,390		
*C 298	CVC29800	7569	2,414		
C 300	CVC30000	7620	2,430		
*C 301	CVC30100	7650	2,295		
C 315	CVC31500	8000	2,552		
C 316	CVC31600	8026	2,560		
*C 323	CVC32300	8200	2,616		
C 324	CVC32400	8230	2,624		
C 330	CVC33000	8382	2,673		
*C 345	CVC34500	8765	2,795		
C 360	CVC36000	9144	2,916		
C 394	CVC39400	10008	3,191		

\* Fornita su richiesta / Supplied on request