



CINGHIE SCANALATE POLY-V POLY-V BELTS

CINGHIE TRAPEZOIDALI SCANALATE PER GRANDI RAPPORTI DI TRASMISSIONE,
ALTE VELOCITÀ DELLA CINGHIA, PULEGGE DI PICCOLO DIAMETRO
E PULEGGE TENDICINGHIA POSTERIORI, DIN 7867

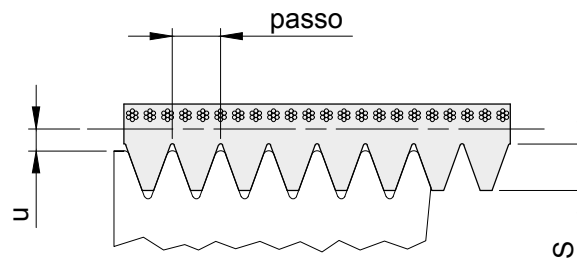
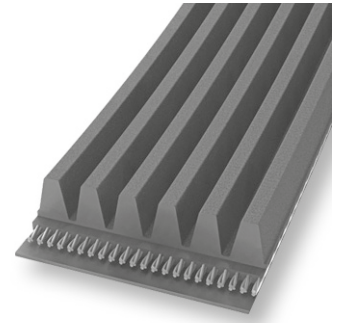
MULTIPLE V-RIBBED BELTS FOR HIGH GEAR RATIOS, HIGH BELT SPEEDS,
SMALL PULLEY DIAMETERS AND BACK-TENSION ROLLERS, DIN 7867

Proprietà

- › Resistenti a temperature comprese tra -30°C e +80°C in funzione dell'applicazione
- › Particolarmente silenziose
- › Idonee per lavorare anche sulla parte esterna con galoppino
- › Elettricamente conduttrici a norma ISO 1813
- › Relativamente resistenti all'olio
- › Utilizzabili in climi tropicali
- › Resistenti alla polvere

Properties

- › Temperature range from -30 °C to +80 °C, depending on application
- › Enhanced running smoothness
- › Suitable for reverse flexing/reverse tensioning idlers
- › Electrically conductive in accordance with ISO 1813
- › Conditionally resistant to oil
- › Suitable for tropical climates
- › Dust-proof



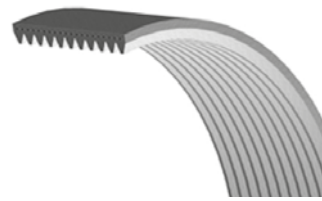
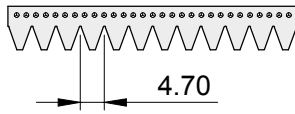
DIMENSIONI CINGHIA DIMENSIONS OF V-BELT

| descrizione | passo mm | S mm | u mm |
|-------------|-------------|---------|---------|
| J | 2,34 | 3,8 | 1,2 |
| K | 3,56 | 4,8 | 1,5 |
| L | 4,70 | 7,5 | 3,0 |

Fornite nervature a richiesta
Supplied ribs on request



CINGHIE SCANALATE POLY-V SEZIONE "L" POLY-V BELTS TYPE "L"



SEZIONE L

SEZIONE L

| descrizione | codice | nervature | sviluppo | | Kg. |
|-------------|---------|-----------|----------|------|------|
| | | | pollice | mm | |
| L 12 954 | L120954 | 12 | 37,50 | 954 | 0,41 |
| L 12 991 | L120991 | 12 | 39,00 | 991 | 0,34 |
| L 12 1041 | L121041 | 12 | 41,00 | 1041 | 0,42 |
| L 12 1075 | L121075 | 12 | 42,30 | 1075 | 0,47 |
| L 12 1149 | L121149 | 12 | 45,20 | 1149 | 0,39 |
| L 12 1168 | L121168 | 12 | 46,00 | 1168 | 0,39 |
| L 12 1194 | L121194 | 12 | 47,00 | 1194 | 0,41 |
| L 12 1219 | L121219 | 12 | 48,00 | 1219 | 0,43 |
| L 12 1270 | L121270 | 12 | 50,00 | 1270 | 0,41 |
| L 12 1295 | L121295 | 12 | 51,00 | 1295 | 0,43 |
| L 12 1321 | L121321 | 12 | 52,00 | 1321 | 0,45 |
| L 12 1333 | L121333 | 12 | 52,50 | 1333 | 0,57 |
| *L 12 1346 | L121346 | 12 | 53,00 | 1346 | 0,57 |
| L 12 1371 | L121371 | 12 | 54,00 | 1371 | 0,59 |
| L 12 1372 | L121372 | 12 | 54,00 | 1372 | 0,47 |
| L 12 1397 | L121397 | 12 | 55,00 | 1397 | 0,47 |
| L 12 1422 | L121422 | 12 | 56,00 | 1422 | 0,49 |
| L 12 1435 | L121435 | 12 | 56,50 | 1435 | 0,49 |
| L 12 1473 | L121473 | 12 | 58,00 | 1473 | 0,50 |
| L 12 1499 | L121499 | 12 | 59,00 | 1499 | 0,51 |
| L 12 1562 | L121562 | 12 | 61,50 | 1562 | 0,53 |
| L 12 1613 | L121613 | 12 | 63,50 | 1613 | 0,69 |
| L 12 1651 | L121651 | 12 | 65,00 | 1651 | 0,56 |
| L 12 1664 | L121664 | 12 | 65,50 | 1664 | 0,54 |
| L 12 1715 | L121715 | 12 | 67,50 | 1715 | 0,84 |
| L 12 1764 | L121764 | 12 | 69,50 | 1764 | 0,77 |
| L 12 1765 | L121765 | 12 | 69,50 | 1765 | 0,60 |
| L 12 1803 | L121803 | 12 | 71,00 | 1803 | 0,69 |
| L 12 1841 | L121841 | 12 | 72,50 | 1841 | 0,78 |
| L 12 1943 | L121943 | 12 | 76,50 | 1943 | 0,81 |
| L 12 1956 | L121956 | 12 | 77,00 | 1956 | 1,05 |
| L 12 1981 | L121981 | 12 | 78,00 | 1981 | 0,83 |
| L 12 2019 | L122019 | 12 | 79,50 | 2019 | 1,12 |
| L 12 2020 | L122020 | 12 | 79,50 | 2020 | 0,87 |
| L 12 2070 | L122070 | 12 | 81,50 | 2070 | 0,90 |
| L 12 2095 | L122095 | 12 | 92,50 | 2095 | 0,93 |
| L 12 2096 | L122096 | 12 | 82,50 | 2096 | 0,90 |
| L 12 2134 | L122134 | 12 | 84,00 | 2134 | 0,92 |
| L 12 2195 | L122195 | 12 | 86,40 | 2195 | 0,92 |
| L 12 2197 | L122197 | 12 | 86,50 | 2197 | 0,95 |
| L 12 2235 | L122235 | 12 | 88,00 | 2235 | 0,96 |
| L 12 2324 | L122324 | 12 | 91,50 | 2324 | 1,32 |
| L 12 2362 | L122362 | 12 | 93,00 | 2362 | 1,02 |
| L 12 2476 | L122476 | 12 | 97,50 | 2476 | 1,07 |
| L 12 2477 | L122477 | 12 | 97,50 | 2477 | 1,07 |
| L 12 2515 | L122515 | 12 | 99,00 | 2515 | 1,05 |
| L 12 2705 | L122705 | 12 | 106,50 | 2705 | 1,17 |
| L 12 2743 | L122743 | 12 | 108,00 | 2743 | 1,19 |
| L 12 2845 | L122845 | 12 | 112,00 | 2845 | 1,23 |

| descrizione | codice | nervature | sviluppo | | Kg. |
|-------------|---------|-----------|----------|------|------|
| | | | pollice | mm | |
| L 12 2895 | L122895 | 12 | 112,00 | 2895 | 1,25 |
| L 12 2921 | L122921 | 12 | 115,00 | 2921 | 1,26 |
| L 12 2997 | L122997 | 12 | 118,00 | 2997 | 1,38 |
| L 12 3086 | L123086 | 12 | 121,50 | 3086 | 1,34 |
| L 12 3124 | L123124 | 12 | 123,00 | 3124 | 1,44 |
| L 12 3289 | L123289 | 12 | 129,50 | 3289 | 1,51 |
| L 12 3327 | L123327 | 12 | 131,00 | 3327 | 1,53 |
| L 12 3492 | L123492 | 12 | 137,50 | 3492 | 1,60 |
| L 12 3696 | L123696 | 12 | 145,50 | 3696 | 1,70 |
| L 12 4051 | L124051 | 12 | 159,50 | 4051 | 1,86 |
| L 12 4191 | L124191 | 12 | 165,00 | 4191 | 1,92 |
| L 12 4470 | L124470 | 12 | 176,00 | 4470 | 2,05 |
| L 12 4622 | L124622 | 12 | 182,00 | 4622 | 2,12 |
| L 12 5029 | L125029 | 12 | 198,00 | 5029 | 2,31 |
| L 12 5385 | L125385 | 12 | 212,00 | 5385 | 2,47 |
| L 12 6096 | L126096 | 12 | 240,00 | 6096 | 2,80 |
| | | | | | |
| | | | | | |
| | | | | | |
| | | | | | |
| | | | | | |
| | | | | | |
| | | | | | |
| | | | | | |
| | | | | | |
| | | | | | |
| | | | | | |
| | | | | | |
| | | | | | |
| | | | | | |
| | | | | | |
| | | | | | |
| | | | | | |
| | | | | | |

* Fornita su richiesta / Supplied on request