

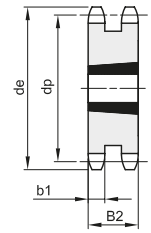
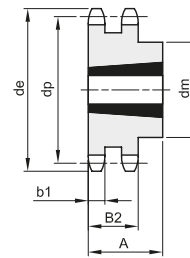
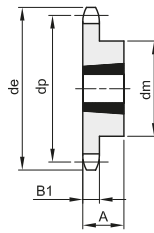
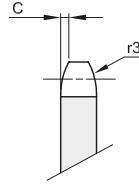


PIGNONI PER BUSSOLA CONICA - DIN 8187 - ISO 606

SPROCKETS FOR TAPER BUSHES - DIN 8187 - ISO 606

1"1/2 x 1"
38,1 x 25,4 mm
Rullo 25,4 mm
24B - 1 - 2 - 3

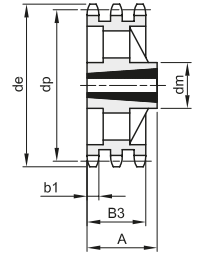
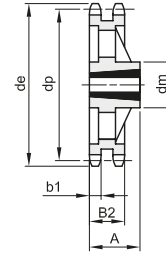
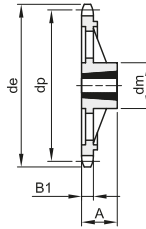
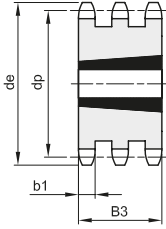
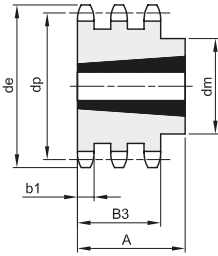
| B1 | B2 | B3 | b1 | C | r3 |
|------|----|-------|------|---|----|
| 24,1 | 72 | 120,3 | 23,6 | 4 | 38 |



1

2

3



4

5

6

7

8

Materiale: Acciaio C45 / *Materiale: Ghisa EN-GJL-200

| Z | de | dp | semplici | | | | | doppi | | | | | tripli | | | | | | | |
|-----|-------|--------|-----------|-----|----|---------|------|-------|-----------|-----|------|---------|--------|-----------|-----------|-------|------|---------|--------|-----|
| | | | codice | dm | A | Bussola | Tipo | Kg. | codice | dm | A | Bussola | Tipo | Kg. | codice | dm | A | Bussola | Tipo | Kg. |
| 11 | 149,0 | 135,21 | 381420011 | 90 | 32 | 2012 | 1 | 1,70 | | | | | | | | | | | | |
| 12 | 161,0 | 147,22 | 381420012 | 90 | 32 | 2012 | 1 | 2,16 | | | | | | | | | | | | |
| 13 | 173,0 | 159,18 | 381420013 | 110 | 44 | 2517 | 1 | 2,77 | 382420013 | 72 | 2517 | 3 | 5,30 | | | | | | | |
| 14 | 185,0 | 171,22 | 381420014 | 120 | 44 | 2517 | 1 | 3,60 | | | | | | | | | | | | |
| 15 | 197,0 | 183,26 | 381420015 | 120 | 44 | 2517 | 1 | 4,20 | 382420015 | 72 | 3020 | 3 | 6,60 | 383420015 | 120,3 | 3030 | 5 | 20,00 | | |
| 17 | 221,0 | 207,34 | 381420017 | 140 | 51 | 3020 | 1 | 5,40 | 382420017 | 72 | 3020 | 3 | 10,30 | 383420017 | 120,3 | 3030 | 5 | 25,00 | | |
| 18 | 233,0 | 219,42 | 381420018 | 140 | 51 | 3020 | 1 | 6,10 | | | | | | | | | | | | |
| 19 | 245,5 | 231,49 | 381420019 | 140 | 51 | 3020 | 1 | 6,85 | 382420019 | 160 | 76 | 3030 | 2 | 14,80 | 383420019 | 120,3 | 3535 | 5 | 30,00 | |
| 20 | 257,5 | 243,57 | 381420020 | 140 | 51 | 3020 | 1 | 7,76 | | | | | | | | | | | | |
| 21 | 270,5 | 255,65 | 381420021 | 140 | 51 | 3020 | 1 | 8,52 | 382420021 | 160 | 76 | 3030 | 2 | 19,50 | 383420021 | 120,3 | 4040 | 5 | 35,00 | |
| 23 | 294,5 | 279,80 | 381420023 | 160 | 51 | 3020 | 1 | 11,31 | 382420023 | 175 | 89 | 3535 | 2 | 24,00 | 383420023 | 120,3 | 4040 | 5 | 44,00 | |
| 25 | 319,0 | 304,00 | 381420025 | 160 | 51 | 3020 | 1 | 13,33 | 382420025 | 175 | 89 | 3535 | 2 | 29,00 | 383420025 | 120,3 | 4040 | 5 | 50,00 | |
| 30 | 379,5 | 364,50 | 381420030 | 160 | 51 | 3020 | 1 | 19,00 | 382420030 | 175 | 89 | 3535 | 2 | 40,00 | 383420030 | 120,3 | 4040 | 5 | 60,00 | |
| 38* | 476,5 | 461,39 | 381420038 | 160 | 76 | 3030 | 6 | 24,00 | 382420038 | 175 | 89 | 3535 | 7 | 44,00 | 383420038 | 120,3 | 4040 | 8 | 66,00 | |
| 57* | 707,5 | 691,63 | 381420057 | 160 | 76 | 3030 | 6 | 45,00 | 382420057 | 175 | 89 | 3535 | 7 | 72,00 | 383420057 | 120,3 | 4545 | 8 | 120,00 | |
| 76* | 939,0 | 921,98 | 381420076 | 175 | 89 | 3535 | 6 | 70,00 | 382420076 | 216 | 102 | 4040 | 7 | 107,00 | 383420076 | 120,3 | 4545 | 8 | 131,00 | |