



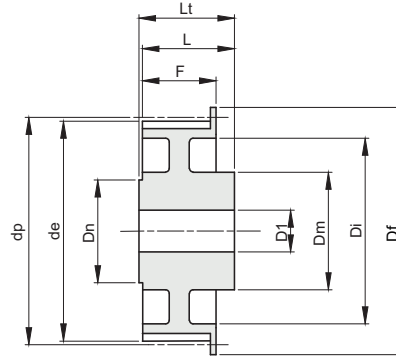
# PULEGGE DENTATE - MATERIALE TERMOPLASTICO

## TIMING BELTS PULLEYS - THERMOPLASTIC MATERIAL

### 5M

PASSO 5 mm

PER CINGHIE LARGHEZZA 25 mm



Materiale: NYLON PA6+FV

descrizione	codice	denti	dp	de	Df	Dm	Dn	Di	F	L	Lt	D1	Kg.
12 5M 25	PV41025012	12	19,10	17,95	22	18	12		31	38	40	6	0,010
14 5M 25	PV41025014	14	22,28	21,14	24	18	12		31	38	40	6	0,013
15 5M 25	PV41025015	15	23,87	22,73	28	18	12		31	38	40	6	0,016
16 5M 25	PV41025016	16	25,46	24,32	28	18	12		31	38	40	6	0,018
18 5M 25	PV41025018	18	28,65	27,50	32	25	16		31	38	40	6	0,023
20 5M 25	PV41025020	20	31,83	30,69	36	25	16		31	38	40	6	0,030
21 5M 25	PV41025021	21	33,42	32,28	36	25	16		31	38	40	6	0,033
22 5M 25	PV41025022	22	35,01	33,87	38	25	20		31	38	40	6	0,036
24 5M 25	PV41025024	24	38,20	37,05	42	25	20		31	38	40	6	0,043
26 5M 25	PV41025026	26	41,38	40,24	44	26	24	31	31	38	40	8	0,046
28 5M 25	PV41025028	28	44,56	43,42	48	26	24	31	31	38	40	8	0,054
30 5M 25	PV41025030	30	47,75	46,60	54	26	24	31	31	38	40	8	0,063
32 5M 25	PV41025032	32	50,93	49,79	57	34	30	40	31	38	40	8	0,072
36 5M 25	PV41025036	36	57,30	56,15	60	34	30	40	31	38	40	8	0,090
40 5M 25	PV41025040	40	63,66	62,52	71	34	30	40	31	38	40	8	0,116
44 5M 25	PV41025044	44	70,03	68,88	75	34	30	57	31	38	40	10	0,100
48 5M 25	PV41025048	48	76,39	75,25	84	34	30	57	31	38	40	10	0,130
60 5M 25	PV41025060	60	95,49	94,35	99	45	40	83	31	38	40	10	0,160
72 5M 25	PV41025072	72	114,59	113,45	122	45	40	83	31	38	40	10	0,280